

RESTAURANT/LOUNGE SEATING LOOK BOOK



MODERNE & MODERNE UPHOLSTERED

All shown in optional chrome. Custom backs available on non-upholstered models.



S10-SQ

w	d	h
20"	21¾"	32¾"



S10-BT

w	d	h
20"	21¾"	35"



10-SQ-SP

w	d	h
20"	22"	32¾"



10-SQ-SBP

w	d	h
20"	22"	32¾"



10-SQ-U

w	d	h
20"	22"	32¾"



S10 models stack frame-on-frame up to 10 high and 10- models nest seat-on-seat up to 10 high.



N6-SQ

w	d	h
20¾"	23"	34"



N6-BT

w	d	h
20¾"	23"	36"



6-SQ-SP

w	d	h
20¾"	23"	34"



6-SQ-SBP

w	d	h
20¾"	23"	34"



6-SQ-U

w	d	h
20¾"	23"	34"



N6 all wood and 6-upholstered models nest seat-on-seat up to six high.

CAFÉ TWIST™

All models available with any combination of wood/upholstery seats and backs. Café Twist designed by Kerstin Bartlmae, Pat. D429,911. Custom backs available.



193

w	d	h
17"	19"	31"



194

w	d	h
17"	19"	31"



195-UPS

w	d	h
17"	19¾"	32"



196

w	d	h
17"	19"	32"



All Café Twist chair models nest up to 6 high and are available in matching barstools.

CASCADE

Fully upholstered on a contoured wood shell.



S10-5701

w	d	h
20"	22¾"	37¼"



Cascade nests up to 6 high.

CAFÉ FLEX™

All models standard with wood backs and available with wood or upholstered seats. Café Flex designed by Kerstin Bartlmae, Pat. #7,014,268. Custom backs available.



291

w	d	h
16½"	22"	32"



293

w	d	h
16½"	22"	32½"



295-UPS

w	d	h
16½"	22"	35"



Café Flex chair models nest 4 high and are available in matching barstools.

STROM™

Custom backs available.



990

w	d	h
18"	20"	32¼"



990-UPS

w	d	h
18¼"	20¾"	32¼"

COMFORTweb® seat standard.

POIZE

All models available with wood back or wood back with upholstered inner pad.



UBP models are upholstered with an inner back pad. This unique upholstery process allows the rich detail of a wood reveal paired with the soft touch of upholstery on the front of the chair.

100

w	d	h
18¾"	21½"	35½"

Custom back available.

101

w	d	h
18¾"	21½"	35½"

Custom back available.

102

w	d	h
18¾"	21½"	35½"

Custom back available.

103

w	d	h
18¾"	21½"	35½"

Custom back available.

103-UBP

w	d	h
18¾"	21½"	35½"

Available on all models.

TOLEDO™ CHAIR

Upholstered pullover seats and maple wood seats can be specified on any model. Custom backs available.



SQUARE CHAIR®

Square Chair designed by Bruce Sienkowski, 2B Studio. Pat. US D576,817.

**187**

w	d	h
18¾"	20"	31¾"

187-WS

w	d	h
18¾"	20"	31¾"

189

w	d	h
18¾"	20"	31¾"

189-UPS

w	d	h
18¾"	20"	31¾"

Toledo Chair models nest up to 6 high.

11/1

w	d	h
17"	20¾"	33½"

Shown with standard matching wood seat.

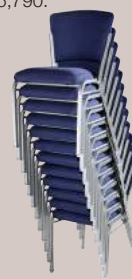
11/2

w	d	h
17"	20¾"	33½"

Shown with standard MTS COMFORTweb® upholstered seat.

IMPILATO

Impilatos stack up to 12 high in less than 6' of space. Custom backs available. Designed by Tolleson Saul Design. Pat. US 8,152,237, D629,630, D635,790.

**12-SIX-U**

w	d	h
18¾"	23¼"	32¼"

12-SIX-UT

w	d	h
18¾"	23¼"	32¼"

12-SIX-W

w	d	h
18¾"	23"	32"

12-SIX-WHH

w	d	h
18¾"	23"	32"

12-SIX-M

w	d	h
18¾"	23"	32¼"

Impilato chairs stack leg-on-leg up to 12 high in less than 6' of space.

CHAIRAZ®

Chairaz designed by Joe Ricchio. Patent D588,826.

**12/1**

w	d	h
19¾"	20¾"	34½"

Shown with optional premium metal glides.

Lightweight aluminum alloy frame allows nesting of six high.

MICAH™

Features a lightweight aluminum alloy frame. Custom back designs available. Available in matching and backless barstools. All models shown with optional premium metal based glides. Designed by Bruce Sienkowski, 2B Studio. Patent D528,813.

**10/1**

w	d	h
18"	21½"	32¼"

10/2 DB

w	d	h
18"	21½"	33¼"

Featuring a low profile COMFORTweb® seat

10/2-3x3

w	d	h
18"	21½"	33¼"

Featuring a low profile COMFORTweb® seat

10/4

w	d	h
18"	21½"	33¼"

Featuring a low profile COMFORTweb® seat

DESIGNER CLASSICS 800 SERIES

These products are covered by the following patent and/or patent(s) pending: Pat. D485,085. Custom backs available on most models.



809 Deco

w	d	h
18¼"	21"	34¼"

Pullover upholstered seat standard. Optional wood or metal seat also available.



813 Luckhardt

w	d	h
17½"	22"	36¼"

Optional saddle-style maple wood seat available.



813-UB Luckhardt

w	d	h
17½"	22"	36¼"



823 Wagner

w	d	h
17½"	21"	35¼"

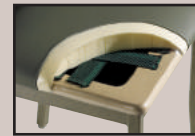
Shown with optional saddle-style maple wood seat.



825 Hoffman

w	d	h
17½"	21"	35¼"

Optional saddle-style maple wood seat available.



All 800 Series are standard with the COMFORTweb® unless noted. All Designer Classics Series are available with an optional saddle-style maple-ply seat. Optional custom back designs available on most models.

To add arm chair option specify AR after model. Specify PAC for plastisol arm (top), OMA for maple wood

BOLERO®

Lightweight high-strength aluminum alloy frame, nestable up to 6 high, except model 81/1. Standard with COMFORTweb® seat. Arm chair models available (except model 81/1), specify A after model number. Matching barstools not available.



81/1 Dining Chair

w	d	h
20"	23½"	36½"



80/1

w	d	h
20"	23½"	36½"



80/1-MESH

w	d	h
20"	23¾"	36½"



80/2

w	d	h
20"	23½"	36½"



80/3

w	d	h
20"	23½"	36½"



80/4

w	d	h
20"	23¾"	37½"



80/5

w	d	h
20"	23¾"	37½"

SALON SERIES

From the MTS Burgess® Collection. Elegant dining chairs featuring lightweight, high-strength aluminum alloy frame. COMFORTweb® seat standard. Nests seat-on-seat 6+ high freestanding. Matching barstools not available. Pat. US D497,729.

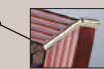


To add arm chair option, specify A after model. Upholstered arm standard. Optional maple and PVC available.



95/1

w	d	h
19"	22"	36"



All models with corner details may be ordered in six optional finishes: chrome, gold, mahogany (gloss or matte), dark walnut, and chestnut. *Federally registered trademark.



95/2

w	d	h
19¾"	22"	34"



95/4

w	d	h
18½"	23"	38½"



95/4HG

w	d	h
18½"	23"	38½"



95/A4HGUB

w	d	h
25"	24"	38½"

DINE FOCUS®

DINEPLUS 20™

20" wide for added comfort. Arm chairs available, specify AR after model number.



96/5

w	d	h
19¾"	22"	36¾"



96/5A

w	d	h
25"	24"	36¾"



985

w	d	h
20¼"	23"	34"



985-DDES

w	d	h
20¼"	23"	34"



983-DES

w	d	h
20"	22½"	34"



983

w	d	h
20"	22½"	34"

Arm chair available. Specify AR after model number.

KILO

All models available with wood top accent or aluminum handhold unless noted.



64/1		
w	d	h
19¾"	24½"	37½"

Nests up to four high.



64/1A		
w	d	h
22¾"	24½"	37½"

Nests up to four high.



64/4 Mid Back		
w	d	h
19¾"	24"	34¼"

Nests up to four high.



65/1-DT		
w	d	h
19¾"	24½"	37½"



65/2		
w	d	h
25"	24½"	37½"



65/4HH Mid Back		
w	d	h
19¾"	24"	34½"



AMERICANA WOODS™

Custom backs available.



65/4WA Mid Back		
w	d	h
19¾"	24"	34¾"



65/6 Low Back		
w	d	h
25"	23¼"	30¾"

Not available with wood top accent or aluminum handhold.



921		
w	d	h
18¼"	19¼"	31"

Shown with optional maple wood saddle seat. Pullover seat standard.



951		
w	d	h
17½"	20"	32½"

Shown with standard maple wood saddle seat.



952		
w	d	h
17½"	20"	32"

Shown with optional pullover seat with two-tone seat welt.



953		
w	d	h
17½"	20"	33½"

Shown with standard maple wood saddle seat.

AMERICANA™



932		
w	d	h
17¾"	21½"	35¾"

Extra deep COMFORTweb® seat standard.



932-AR		
w	d	h
22½"	21½"	35¾"

Extra deep COMFORTweb® seat standard.



942		
w	d	h
17¾"	19½"	32"

Shown with standard pullover seat.



944		
w	d	h
17¾"	19¾"	32"

Shown with optional maple wood saddle-style seat.



945		
w	d	h
17¾"	19½"	32"

Shown with standard pullover seat.



948		
w	d	h
17¾"	19½"	32"

Shown with standard pullover seat.

SCHOOLHOUSE

All Schoolhouse chairs feature a lumbar support back. Custom backs available.



981		
w	d	h
18½"	23½"	34"

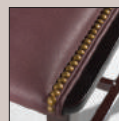


981-AR		
w	d	h
23½"	23½"	34"



981		
w	d	h
18½"	23½"	34"

Shown with optional cobbler-style seat.



Cobbler style seat with brass nails. Specify CWF



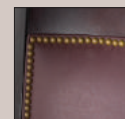
981-UB		
w	d	h
18½"	23½"	34"

Shown with optional COMFORTweb® seat.



981-UB		
w	d	h
18½"	23½"	34"

Shown with optional COMFORTweb® seat, Brass nail edge (BNE) and Brass nail inside back (BNI).



Brass nail. Specify inner back (BNI)



COMFORTweb® seat (CWS) with brass nail edge (BNE)

KILO



64/1-30		
w	d	h
19½"	22¼"	43¼"

Available with HH, WA, and DT options (Refer to page 5)



64/1-30BB		
w	d	h
19¾"	24"	34¼"

Backless barstool



100-30		
w	d	h
19"	21"	47"

Custom back available.



103-30-UBP		
w	d	h
19"	21"	47"



985-30		
w	d	h
20½"	22½"	45¾"



985-30-DDES		
w	d	h
20¼"	23"	45¾"

DINEPLUS 20



983-30		
w	d	h
18"	20½"	43½"



187-30		
w	d	h
19¼"	20½"	42½"

Metal back with upholstered seat.



189-30		
w	d	h
19¼"	20½"	42½"

Wood back and seat.

IMPIILATO



12-SIX-M-30		
w	d	h
18"	23"	43½"

Custom back available.



12-SIX-WHH-30		
w	d	h
18"	23"	43½"

Custom back available.



12-SIX-U-30		
w	d	h
18"	23½"	43½"

Custom back available.

CAFÉ TWIST®

Custom backs available.



193-30		
w	d	h
19½"	19"	42¾"



194-30		
w	d	h
19½"	19"	42¾"



195-30		
w	d	h
19½"	19"	43¾"



291-30		
w	d	h
16½"	22"	45"

Custom back available.



293-30		
w	d	h
16½"	22"	45½"

Custom back available.



295-30		
w	d	h
16½"	22"	48"

Custom back available.

CAFÉ FLEX™

Available in any combination of wood or upholstered seats.

MICAH™

Lightweight aluminum alloy frame. Custom backs available. All models shown with optional premium metal glides.



10/1-30		
w	d	h
18"	20½"	44¼"



10/2-30		
w	d	h
18"	20½"	44¼"

COMFORTweb® seat standard.



10/3-30		
w	d	h
18"	20½"	44¼"

Upholstered inner back and COMFORTweb® seat.



10/1-30BB		
w	d	h
16"	16"	30"



10/2-30BB		
w	d	h
16"	16"	30"

SCHOOLHOUSE

Custom backs available.



981-30

w	d	h
17¼"	21"	43"



981-30-UB

w	d	h
17¼"	21"	43"



901-30-981

w	d	h
17¼"	21"	43½"



921-30

w	d	h
18¼"	19¾"	42¾"



951-30

w	d	h
17½"	20"	43"



952-30

w	d	h
17½"	20"	42½"



953-30

w	d	h
17½"	20¼"	43½"

Shown with optional maple wood saddle-style seat.
Pullover seat standard.

AMERICANA™



942-30

w	d	h
17¾"	20"	42½"



944-30

w	d	h
17¾"	20½"	42½"

Shown with optional maple wood saddle style seat.



945-30

w	d	h
17¾"	20"	42½"



948-30

w	d	h
17¾"	20"	42½"



990-30

w	d	h
18¼"	21"	42¾"



990-30-UPS

w	d	h
18¼"	21¼"	42¾"

COMFORTweb® seat standard.

STROM™

SQUARE CHAIR®

Custom backs available.



11/1-30

w	d	h
17"	20½"	43¼"



11/2-30

w	d	h
17"	20½"	43¼"

Shown with standard COMFORTweb® seat.

MODERNE

Shown as 30" barstools, also available in 24" height. Custom backs available.



10-30-SQ

w	d	h
18"	22"	44¾"

Shown in optional chrome.



10-30-BT

w	d	h
18"	22"	47"

Shown in optional chrome.



6-30-SQ

w	d	h
16"	23½"	45½"

Shown in optional chrome.



6-30-BT

w	d	h
16"	23½"	47¾"

Shown in optional chrome.

MODERNE UPHOLSTERED

Shown as 30" barstools, also available in 24" height.



10-30-SQ-SP

w	d	h
18"	22"	44¾"

Shown in optional chrome.



10-30-SQ-SBP

w	d	h
18"	22"	44¾"

Shown in optional chrome.



10-30-SQ-U

w	d	h
18"	22"	44¾"

Shown in optional chrome.



6-30-SP

w	d	h
16"	23½"	45½"

Shown in optional chrome.



6-30-SQ-SBP

w	d	h
16"	23½"	45½"

Shown in optional chrome.



6-30-SQ-U

w	d	h
16"	23½"	45½"

Shown in optional chrome.

DESIGNER CLASSICS 800 SERIES

CHAIRAZ®


809-30 Deco

w	d	h
18½"	21¼"	44"


813-30 Luckhardt

w	d	h
17½"	21¾"	45¾"

Inset: upholstered back.


Specify
813-30-UB

823-30 Wagner

w	d	h
19"	21"	44¾"

Custom back available.


825-30 Hoffman

w	d	h
19"	21"	44¾"

Custom back available.


12/1-30

w	d	h
19¾"	21¼"	42"

Shown with optional
premium metal glides.

PUBLIC SPACE AND LOUNGE SEATING

810, 831, 832 available with optional casters.


831 Novella

w	d	h
27½"	28"	34"

Available with optional tablet
arm – specify TA.

8722-18-M Coralie

w	d	h
28"	26¼"	40"

18" Standard seat height. Also
available in 16" lounge seat height.

810-CHI Marquis

w	d	h
29½"	24½"	31"

Shown with optional channels.


832 Essence

w	d	h
27¾"	28"	35¼"


8610-R Paragami

w	d	h
26½"	27"	36"


8822-30-A Paragami

w	d	h
24½"	24½"	43¾"


8722-18-H Inessa

w	d	h
28½"	25"	31"

18" Standard seat height. Also
available in 16" lounge seat height.

7523-C-N-Swivel

w	d	h
25"	23½"	31¾"


8900-U2 Inessa

w	d	h
27"	25¾"	32¼"


8612-E-CHI Lehto

w	d	h
19¾"	21¼"	33¼"


8501-SQ-U Moderne

w	d	h
18¾"	22"	31¾"


8722-30-5710 Cascade

w	d	h
22"	22"	38¾"


8621-X Emma

w	d	h
20½"	24¼"	33"


8818-30-915

w	d	h
18"	18"	31"


901-30-RD Swivel

w	d	h
18½"	18½"	29½"


316-30-G Legacy Collection

w	d	h
20½"	20½"	44¼"


911-30

w	d	h
18½"	18½"	30½"

Standard with brass nail trim.
Without nail trim, specify
Model 910-30.

902-30-K Legacy Collection

w	d	h
20¾"	21"	43"

MTS CUSTOM SHOPPE



With our unparalleled "Made in the USA" manufacturing capabilities, we can bring your vision to reality. At the MTS Custom Shoppe we can quickly modify any of our existing designs to meet your requirements. For larger orders, we have the ability to take your own unique design from paper to production. From your dimensioned sketch, our design and engineering professionals can recommend ideas to meet your needs and help bring your custom product to life!

Do you have a corporate logo, decorative shape or favorite design element that you would like to incorporate into your chair or barstool? At the MTS Custom Shoppe, we can achieve your built-to-order look! Custom back design elements can be CNC cut-out or laser etched into wood backs, laser cut in metal backs, or embroidered on upholstered backs.

If a custom wood stain is needed, the MTS Custom Shoppe maintains in-house custom stain matching capabilities to ensure compatibility with our eco-friendly, water-based, wood finish system.

Make your seating stand out from the rest! Contact one of our Sales Coordinators at 734-847-3875 with your requirements and let the MTS Custom Shoppe design and engineer your next project!

Restaurant/Lounge Tables

TABLE BASES



MTS Table bases are available in many different sizes as well as standard table and stand-up heights. Contact MTS for further information.

* Available on CI Round bases only.

SOLID WOOD TABLE TOPS

All 370-380 series tops are standard in Maple. Optional Red Oak available, specify OAK. Optional 3½" radiused corners are available.



SIERRASOLID® ORIGINAL AND VENEER MOLDED TABLETOPS



261 Roundover Edge



262 Ogee Edge



264 Bullnose Edge

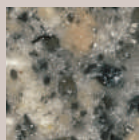


265 Chamfer Edge

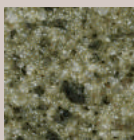


260 1 1/4" Eased Flat Edge. 1/8" veneer solid surface material over a 3/4" exterior grade plywood core.

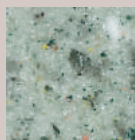
Group I Colors:



Z47
Khaki



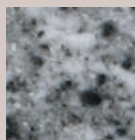
Z48
Sagebrush



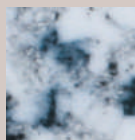
Z49
Heather Green



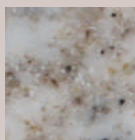
Z50
Black Granitz



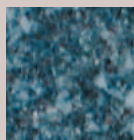
Z51
Gray Granitz



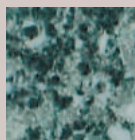
Z53
Blue Granitz



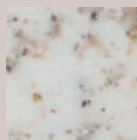
Z55
Brown Granitz



Z57
Stellar Blue



Z59
Suellia Green



Z60
Nutmeg



Z61
Harvest Sand



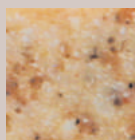
Z64
Lynne Star



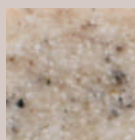
Z65
Black Quarry



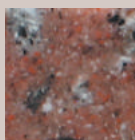
Z66
White Quartz



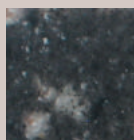
Z67
Golden Oak



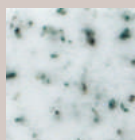
Z70
Brownstone



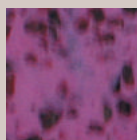
Z71
Pezza



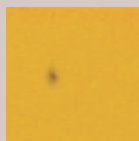
Z72
Gravel



Z73
Green Fleck



Z75
Kauai Purple



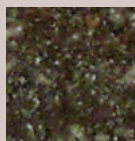
Z76
Saffron



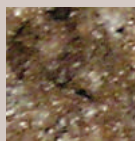
Z79
Pistachio



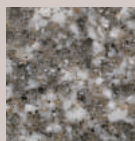
Z80
Mahogany



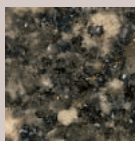
Z81
Dark Chocolate



Z82
Milk Chocolate



Z83
Riverstone

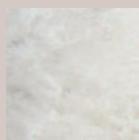


Z85
Sable Shimmer



Z86
Moroccan Spice

Group II Colors:



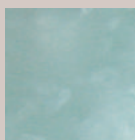
Q50
Glacier



Q51
Starlit



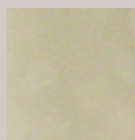
Q52
Blue Glass



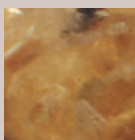
Q53
Aqua Ice



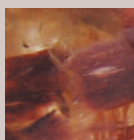
Q54
Green Glass



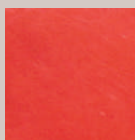
Q55
Golden Ray



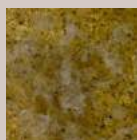
Q58
Mesa Gold



Q59
Sienna



Q60
Red



Q61
Mossy Stone



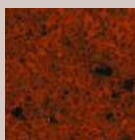
Q62
Coral Sand



Q63
Jade



Q64
Tide Pool



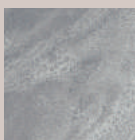
Q65
Marrakesh



Q66
Spumoni



Q67
Mooncape



R01
Metallo



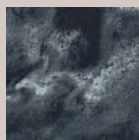
R02
Grigio



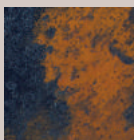
R03
Carrara



R04
Crema



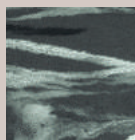
R05
Ardesia



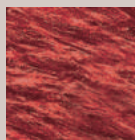
R06
Ruggine



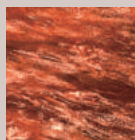
R07
Cielo



R08
Verde



U51
Wine



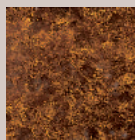
U52
Autumn



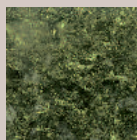
U53
Terrain



U54
Cobalt



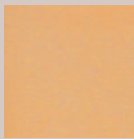
U55
Amber Zest



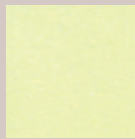
U56
Pesto



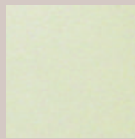
T50
Amethyst



T52
Topaz



T53
Sheer Peridot



T54
Crystal



T55
Sapphire



E1
Midnight Sky



E2
Cosmic Carbonite



E3
Super Nova



E4
First Frost



E5
Copper Mist



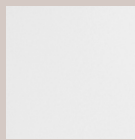
E6
Silver Ore



E7
Smokey Sunset



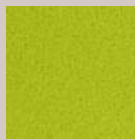
E8
Copper Radiance



BG1
Sugar Cube



BG2
Lavendar Zest



BG3
Kiwi



BG4
Emerald

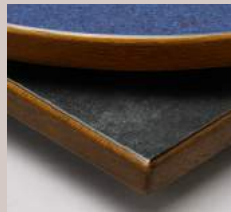
All colors shown at actual size.

260 series only available in Group I colors except Z85 Sable Shimmer which is available at an upcharge. Q58 Mesa Gold and Q59 Sienna are only available on 261 tops, in limited sizes. Contact MTS for availability.

WOOD EDGE TABLE TOPS


model
311

1 1/4" x 1 1/4" Square Maple or Optional Red Oak Edge.


model
313

1 1/4" Square exposed Maple or Optional Red Oak with trimmed laminate overlay.


model
315

1 1/4" x 1 1/4" Bullnose Maple or Optional Red Oak Edge.


model
321

1 1/4" x 1 1/4" Bullnose Maple or Optional Red Oak Edge.


model
330

1 1/4" x 2 1/2" Bullnose Maple or Optional Red Oak Edge.


model
331

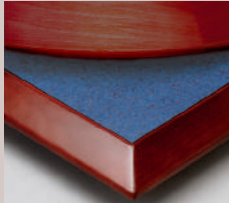
1 1/4" x 2 1/2" Square Maple or Optional Red Oak Edge.



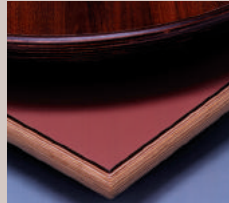
331 with
CI-22R-3LS
base



350 with
1522-2LS
base


model
333

1 1/4" x 2 1/2" Reverse Square Knife Edge Maple or Optional Red Oak.


model
350

1 1/4" Bullnose Birchply.


model
351

1 1/4" Knife Edge Birchply.


model
352

1 1/4" Reverse Knife Edge Birchply.

VINYL AND METAL EDGE TABLE TOPS

Vinyl Gives You The Edge On Durability

Our vinyl-edge 232 and 234 Series deliver maximum performance in high traffic applications. Durable vinyl protects table edges and stands up to wear and tear beautifully. The result is long-lasting durability where you need it most. A perfect balance of aesthetics and pragmatics.

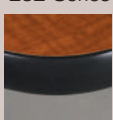


250 with
3017-3LS base



234 with
CI-22T-3LS base

232 Series



T-10
Black



T-21
Char Brown

234 Series



B01
Black



B11
Metallic
Espresso



B03
Cabernet



B13
Metallic
Antique Gold



B07
Camel



B14
Metallic
Brass



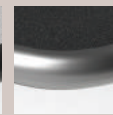
B08
Chocolate



B15
Metallic
Charcoal



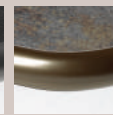
B09
Bittersweet



B16
Metallic
Silver



B10
Metallic
Copper

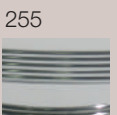


B17
Metallic
Impala

250



Satin Finish
Aluminum Edge

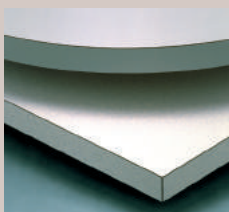


Polished Finish
Aluminum Edge

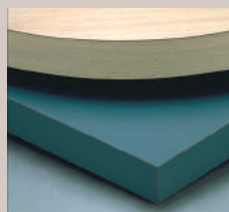
LAMINATE SELF EDGE TABLE TOPS



210 and
CI-22R-3LS base.


model
210

1 1/4" Self Edge

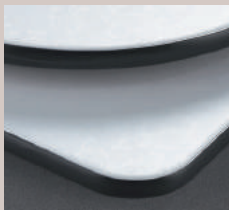

model
211

1 1/4" Self Edge

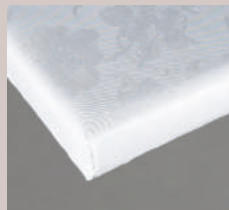
FOLD-A-LEAF™ AND PADDED TABLE TOPS



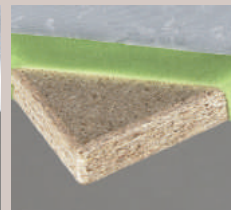
Fold-a-Leaf® Available in limited sizes.



202 Series Padded Table Top with protective bumper edge.



205 Series Padded Table Top.



Padded Table Top Cut-away. Featuring "Industrial Grade" board substrate with radiused edges to reduce wear and tear on padded vinyl cover.

A COMPLETE LINE OF HOSPITALITY PRODUCTS

Banquet & Meeting Room Seating



Restaurant, Club & Lounge Seating



Guest Room & Public Space Seating



Ergonomic Guest & Conference Room Seating



To see the entire line of MTS hospitality products, visit www.mtsseating.com.

Tables & Bases



Staging Products



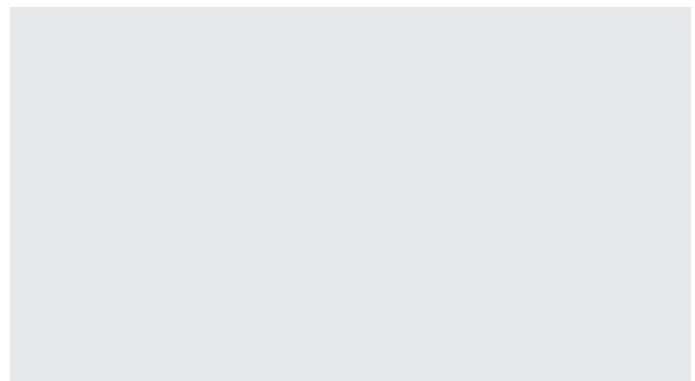
MTS Seating is sensitive to the impact of our manufacturing on the world around us. That's why we developed and adopted the SynerGreen® philosophy to make continuous environmental improvements in our processes and products, while practicing sound business principles to focus on satisfying customer needs. In addition, MTS is proud to be the first hospitality banquet seating manufacturer to earn the GREENGUARD® Indoor Air Quality Certification on our line of stacking, banquet and restaurant seating, and in 2014, MTS received Sustainability Leader status with the MindClick Global Hospitality Sustainability Index.



Visit our website at mtsseating.com to find out more about our SynerGreen program and for the big picture in turnkey solutions for every seating setting.

Discover performance engineering, ergonomics today's hospitality industry demands, and the design impact to make a lasting statement – whimsical to romantic, retro to regal.

The MTS Representative in your area is:



Restaurant
Look Book

October 2016



MTS Seating
7100 Industrial Drive
Temperance, MI 48182
734-847-3875
FAX: 800-329-0687
mtsseating.com
theartofseating.com

