



# HOSPITALITY

## ENHANCING THE GUEST EXPERIENCE

- *In-Room Dining* • *Catering* • *Banqueting*
- *Meeting Room* • *Buffet Stations*



Distributed in Canada by

**davidson**

FURNITURE SPECIALTIES LTD.



[www.sicoinc.com](http://www.sicoinc.com)



## SICO® Solutions:

In 1951, SICO® Inc. began with a single product; a mobile folding table. In the decades since, SICO® has set the standard for superior equipment in the Hospitality industry. This reputation was built on a strong commitment to quality manufacturing and service.

SICO® tables offer complete event solutions throughout a property: Banquets, Catering, In-Room Dining, Pre-Function, Meetings/Seminars, even Common Areas.



## Sustainable Design:

SICO believes our future success is built on a business model that embraces operational efficiency, environmental stewardship, and social responsibility. We believe in leading through example, and in creating the best customer experience.

As part of this commitment, we are developing products and services that reduce the use of non-renewable resources, minimize environmental impact, and follow the principles of Sustainable Design.

To support this effort, we have a growing number of SICO® products that have now been certified with the GREENGUARD® mark of distinction. All of these products have gone through a stringent independent testing program that has affirmed that they meet the high standards set by the GREENGUARD® Environmental Institute for product emissions into the indoor air stream.



## Linenless:

As part of this sustainable design, most SICO® tables are designed with the form and function to be used in a linenless manner. With a wide assortment of high-pressure designer laminates, SICO Armor-Edge®, and modern frame and leg design, linens become a relic of the past. This makes SICO® tables a part of your own property's initiative for sustainability.



## The Guest Experience:

To win in the highly competitive hospitality market, creating an unforgettable guest experience is what brings guests back. SICO® products create the edge to stand out, and deliver an incomparable guest experience.

SICO® products are designed to stand out creatively, functionally, and practically. They will serve as an attraction to any catering function, and a long-term investment in your facility's operations.



### Index:

#### ***In-Room Dining***

Room Service Tables

Food Warmers & Storage/ Transport Systems

Pages 3 - 5

Pages 6 - 7

#### ***Catering & Pre-Function Tables***

Sophisticate Tables

Socializer

Deluxe Linenless Catering Tables

Classic Catering Tables

Page 8

Page 9

Page 10

Page 11

#### ***Banqueting Tables***

Armor-Edge® FLT (Folding Leg Tables)

Pacer & Pacer II Linenless Tables

Page 12

Page 13

#### ***Multi-Purpose Table: (Meeting Room, Common Area, etc.)***

MultiApp & MultiApp IIS Linenless Tables

Page 14

#### ***Buffet Station Systems:***

Sophisticate Plus

DECO Buffet Stations

Ovation Buffet Stations

Page 15

Page 16

Page 16

#### ***Specifications***

Pages 17 - 19

#### ***Complete Event Solutions***

Page 20



# IN-ROOM DINING



## ROOM SERVICE TABLES

Manufactured by  
**SICO**

Distributed in Canada by  
**davidson**  
FURNITURE SPECIALTIES LTD.

- SICO Room Service Tables are quiet whether rolling to guest rooms, or returning to the kitchen. Vinyl-coated PVC racks eliminate noisy metal-to-metal contact when transporting any size food warmers, cup racks, etc.
- Easy-care high-pressure plastic laminate tops and rigid vinyl backer sheets can be cleaned with soap and water or steam cleaned. Large selection of laminate colors available.
- The SICO Armor-Edge® is the strongest edge available. It hermetically seals the edge for sanitary purposes, allowing for easy clean-up, including steam cleaning.
- The MDF core outperforms plywood or particle board, is lightweight and resists warping.
- Easily cleaned frames are available in high quality nickel chrome plate or black powdercoat finish so that they remain professional-looking for years.
- 4" (10cm) gray polyurethane wheel. Zinc plated caster for attractive appearance and corrosion resistance.
- Extra heavy self-cleaning vertical hinges give extra security to whatever gets loaded on your room service tables.
- Comfortable seating for four with oval shape tables that won't crowd your guest rooms. The oval shape also makes it easier for guests to reach everything on the table. SICO's center leg design gives your guests extra leg room. Racks flip up to allow unobstructed seating.

*See Specifications on page 17*



Retractable bar locks table wings in place when table is in fully flat position.



## OPTIONS:

Table Guide rotates instantly from stored position beneath tables into use. Table Guides allows ergonomically correct posture to transport room service tables.



Unit-to-unit table connectors allow one person to pick-up or deliver a long train of tables. You save time and labor.





# IN-ROOM DINING



Manufactured by  
**SICO**

Distributed in Canada by  
**davidson**  
FURNITURE SPECIALTIES LTD.

## ROOM SERVICE TABLES

SICO OFFERS YOU MANY CHOICES IN ROOM SERVICE TABLES.

*See Specifications on page 17*



### TRI-FOLD

SICO Tri-Fold Room Service Table is an exclusive SICO design. It is the only table available where the leaves are locked in an upright position, greatly reducing spillage and breakage. Leaves may be folded down for transport, folded out for serving, and then locked in the upright position for return to your kitchen. Top easily tilts to a vertical position for storage.



Oval & Rectangle Tri-Fold table choices.  
Large selection of laminate colors available.



Tops fold vertically for storage on Tri-Fold, Bi-Fold, and Uni-Fold tables. Tables can be nested in a minimum of floor space, 6 1/2" (16.5cm) during storage.



# BI-FOLD

SICO Bi-Fold Room Service Table has all the same quality features of the Tri-Fold except an upright fold position. Leaves may be folded down for transport, then folded out for service. Top easily tilts to a vertical position for storage, allowing units to nest compactly together.

Bi-fold room service tables are available in a wheelchair accessible model.



Manufactured by  
**SICO**

Distributed in Canada by  
**davidson**  
FURNITURE SPECIALTIES LTD.



Oval & Rectangle Bi-Fold tables choices.  
Large selection of laminate colors available.

# RIGID FRAME

SICO Rigid-Frame Bi-Fold Room Service Table is a work-horse table for those desiring extra-strength incorporated into a four-legged design.



# UNI-FOLD

SICO Uni-Fold Room Service Table is a table that retains many of SICO's best features, without leaves. Designed for service for two, it also works well as a banquet server table. Top folds vertically for storage in a minimum of space.



# FOOD WARMERS & TRANSPORTS

Manufactured by  
**SICO**

Distributed in Canada by  
**Davidson**  
FURNITURE SPECIALTIES LTD.

## ELECTRIC FOOD WARMERS

SICO ELECTRIC FOOD WARMERS DELIVER FOOD THE WAY YOUR CHEF PREPARED IT.

- Maintain the original quality of food. SICO Electric Food Warmers present food hot from the kitchen, without overcooking or drying out. No more solid fuel odors in your food.
- With SICO Electric Food Warmers your staff is not moving open flames down your corridors and into your guest rooms. No scorched linens from handling fuel containers.
- More usable space inside warmers. SICO Food Warmers have four shelves, not three, allowing additional servings to be carried in each unit.
- SICO Electric Food Warmers are energy efficient. All sides and the door are insulated to retain heat. The units are so well insulated that they may also be used to transport cold food.
- Easy to care for exterior is stainless steel, or black powdercoat interior is aluminum. Both clean quickly and easily. Removable back panels make repairs easy and affordable.
- Easy to handle. Top handle stays cool to the touch. Side handles allow ease of placement on Room Service Tables. The door has a visible, positive gravity lock on the right hand side of the unit.
- Easy to use. Just plug in and turn on the switch located on the back.
- Units may be ordered for 120 volt or 240 volt current. Each unit has its own built-in thermostat to keep the temperature at the optimum level.
- All riveted construction. No spot welds for increased durability.

*See Specifications on page 17*

## MOBILE ELECTRIC WARMERS

Optional:

Mobile Electric Food Warmer makes removing the box simple and easy by pulling up the retractable handle and rolling it out on its own casters.



Retractable handle.



## ELECTRIC FOOD WARMER TRANSPORT





## SOLID FUEL WARMERS

- Positive gravity lock keeps doors closed. SICO's unique doors can't be accidentally left partially unlocked or knocked open during transport, keeping both food and flame securely inside the box.
- Double-wall construction keeps the exterior of the box from getting too hot to handle.
- Entire unit is reinforced stainless steel, so it can be easily cleaned. It is also less likely to be dented in hard everyday use.
- Available in stainless steel or black powdercoat.



## GRAVITY-FEED STORAGE RACKS



### GRAVITY-FEED STORAGE RACKS

Space efficient storage racks preheat and store large numbers of boxes in a confined space. These racks preheat and hold warmers ready for use in larger kitchens.

SICO offers design assistance in planning a custom installation in your facility. Each single gravity-feed storage rack holds up to nine electric warmers. Each double feed gravity rack holds up to 18 boxes.

### MOBILE TRANSPORT

SICO Mobile Transport holds your food warmers heated and ready for service. Transport holds six units and rolls to where it's needed. Six SICO Electric Food Warmers may be set on the shelves of the SICO Caddy and can be plugged into the master electric power unit which has its own cord and switch. 120 volt unit operates on a standard 15 amp circuit. Available for 120 volt or 240 volt warmers.



# CATERING TABLES

Manufactured by  
**SICO**

Distributed in Canada by

**davidson**  
FURNITURE SPECIALTIES LTD.

## SOPHISTICATE LINENLESS TABLE

A beautiful combination of style, mobility, and durability  
in one table that is perfect for all of your events!

- Durable 1/4" (.6cm) granite composite top made of 95% natural stone and 5% Polymer formed over 3/4" (2cm) MDF.
- Cut directly on the table surface without scratching.
- Set hot items up to 500° directly on the surface.
- NSF certified and completely sealed top surface.
- Laminate top option available. Large selection of colors available.
- Set-up a complete presentation in the kitchen and roll into your guest function.
- Hydraulic dampers make folding and unfolding the table quick and easy.
- Also available with the SICO Armor-Edge®, the strongest edge available.

[See Specifications on page 17](#)



Easily roll into and out of service for multiple functions.



Tables nest for efficient storage.



A multi-purpose piece of furniture that  
can be used throughout your facility.



A table so elegant, it doesn't require linen or skirting.

### STANDARD GRANITE COMPOSITE TOP CHOICES



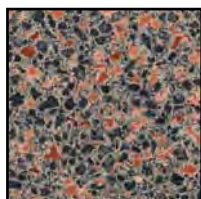
Nero Galaxy (60)



Karra Oro (62)



Bianco Modena (67)



St. Leo's Copper (68)

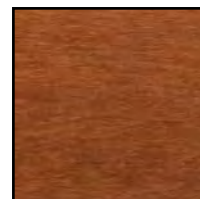
### STANDARD MAPLE TRIM CHOICES



Natural Maple (23)



Burgundy Walnut (24)



Cape Cod (25)



# PRE-FUNCTION TABLES

Manufactured by  
**SICO**

Distributed in Canada by

**davidson**  
FURNITURE SPECIALTIES LTD.

## SICO SOCIALIZER® LINENLESS TABLE

### THREE TABLE CHOICES IN ONE

The versatile SICO SOCIALIZER® comes in three distinct models designed to meet your facility's needs.

- **Mobility.** Needs no caddy. One person can easily roll this table into service or storage. There is no lifting necessary, no loose parts to assemble, or lose, and no hassle!
- **Storage.** Nests in a minimum of storage space because of the unique leg design and the folding top. Each additional unit requires only 6" (15.24cm) of storage space.

*See Specifications on page 17*

### THE STAND-A-ROUND

A single height table designed for events where guests remain standing. 41" (104cm) high.



### THE SIT-A-ROUND

A single height table designed for seating. 29" (74cm) high.



### THE ALL-A-ROUND

A multiple height table with 12 adjustments from 29" (74cm) to 41" (104cm).



Large assortment of laminate colors available to match your décor.



Rectangle shape also available.

# CATERING TABLES



## DELUXE LINENLESS CATERING TABLES

THE SICO TWO-TIER DELUXE AND SINGLE-TIER DELUXE LINENLESS CATERING TABLES COMBINE AN UPSCALE LOOK, MORE SPACIOUS UPPER AND LOWER SERVING SURFACE, PLUS EASIER OPERATION. THIS TABLE SHOWCASES A BEAUTIFUL COMBINATION OF STYLE, MOBILITY & DURABILITY IN ONE ELEGANT PACKAGE.

- Upscale design. A new oval frame that provides strength, stability, and style. No skirting required.
- Green design. From top to bottom, this table has been designed to be used **WITHOUT LINENS**.
- Ease of operation. Rolls smoothly into service and folds neatly into the storage position.
- Larger service area: With two tiers of continuous surface space, the new upscale catering table will service all your catering needs.
- Tough .04" (.10cm) thickness high-pressure laminate tabletops meet NEMA spec outperforms plywood or particle board, is lightweight and resists warping.
- Large assortment of laminate colors available to match your décor.
- Versatile: Can be used as a reception desk, display stand, or dry bar.

[See Specifications on page 18](#)

Hydraulic damper ensures a slow, smooth fold into storage position.



Spring-loaded latch and catch auto lock keeps top tier secure in use position.



# CLASSIC CATERING TABLES

Manufactured by  
**SICO**

Distributed in Canada by  
**davidson**  
FURNITURE SPECIALTIES LTD.

SICO CATERING TABLES SET IN THE KITCHEN, ROLL INTO USE, READY TO SERVE.

- Pre-set in the kitchen. A SICO Catering Table allows a beautifully presented service to be completely set-up in the kitchen, then rolled into use by one person.
- SICO reduces labor costs because there is no need to double-handle everything on the service table. Only one person is needed to roll a table into service. A cost effective way to serve lunch to small groups.
- Top quality construction include tops that are MDF construction with SICO Armor-Edge® for easy cleaning.
- The table opens easily from the folded position with the SICO air-brake.
- Roll quietly and easily. SICO Catering Tables won't disturb meetings. Quiet 5" (12.7cm) SICO casters are oversized, so tables roll easily over thresholds, and down carpeted hallways. Roll in a coffee service, or lunch without disturbing events. Two casters may be locked when table needs to remain stationary.
- Two-tier Jr. is designed for easy access into confined spaces.
- Vinyl-coated PVC racks eliminate noisy metal-to-metal contact when transporting any size food warmers, racks, etc.
- Versatile tables include storage racks underneath for holding extra glasses, cups, food warmers, ice buckets, etc.
- Large assortment of laminate top colors available.

[See Specifications on page 18](#)

Multiple uses. Serves as catering / buffet tables, dry bars, or registration desks.

## TWO-TIER SR.



Fifth wheel allows for unusually heavy loads and easy mobility.

## TWO-TIER JR.



## SINGLE-TIER





# BANQUET TABLES



Manufactured by  
**SICO**

Distributed in Canada by  
**davidson**  
FURNITURE SPECIALTIES LTD.

## SICO ARMOR-EDGE® FLT

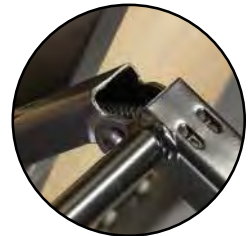
The quick and easy table solution for any banquet event

- Extra heavy-duty SICO Armor-Edge® treatment has a proven track record for long-term durability. No gaps, or seams to trap food.
- Seamless one-piece 5/8" (1.6cm) plywood core with sealed plywood veneer surface or high-grade laminates.
- Tough and flexible leg stops protect the finish on the legs when tables are stacked for storage.
- 1-1/4" (3cm) / 18-gauge (1.2mm) painted black top frames with extension arms for support are attached to the top with expansion rivets, not screws which can work loose over time.
- 1-1/4" (3cm) / 18-gauge (1.5mm) painted black legs are fixed height with a plastic, nonadjustable glide. 1-3/16" frame and legs on oval, quarter, and half-round shapes.
- Modesty panel option available.

[See Specifications on page 18](#)



Legs nest within one another to hold in the folded position.



Positive lock ensures engagement in fixed position.



**Plywood Top**



**Caddies available for all size and shape tables.**



**Laminate Top**  
(Large selection of color options available.)

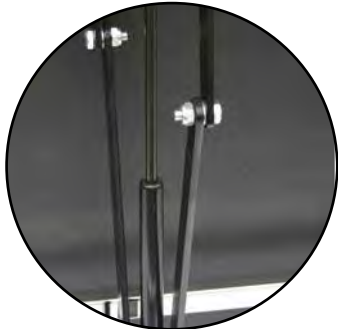


## PACER II LINENLESS TABLE

One piece seamless laminate tabletop provides guests a spacious surface for their food & beverages.

- Elegant 16-gauge oval tube design creates a table with increased strength and durability that requires no linens.
- SICO Armor-Edge® treatment has a proven track record that eliminates cracking, peeling, and chipping of table edges.
- Undercarriage is 16-gauge square tube design for extra strength and durability.
- Obstruction-free frame and leg design provides comfortable seating for all guests (and less bumping of legs).
- Tough high-pressure laminate tabletops meet NEMA specifications for durability and wearability.
- Legs are quality nickel chrome plated or colorful powder-coat finished for superior durability and ease of cleaning.

[See Specifications on page 19](#)



Pneumatic damper makes raising and lowering tabletop an effortless one-person operation.



## PACER TABLE

### THREE WAYS TO IMPROVE PROFITABILITY

#### Faster Turns

- The SICO Pacer is designed to take the work out of set-up, tear down, and trips to storage.
  - These tables fold and roll quickly and easily into storage and back into action the minute you need them.
- Quicker turns mean you can schedule more events and increase Banquet Sales.

#### Longer Product Life Cycle

- Because SICO Pacer tables store on their own built-in wheels, their tops are not subjected to the constant punishment that conventional folding tables endure when they are rolled on the table edge to and from storage.

#### Labor Savings

- Banquet Managers continue to marvel at how fast the Pacer can be rolled out two at a time from storage and quickly set-up by one person. With ever shrinking budgets, they are pleased with the time and labor savings.

[See Specifications on page 18](#)



A variety of shapes and sizes and a large assortment of laminate colors available to match your décor.



# MULTI-PURPOSE TABLES



Manufactured by  
**SICO**

Distributed in Canada by  
**davidson**  
FURNITURE SPECIALTIES LTD.

## MULTIAPP LINENLESS TABLE

YOUR CHOICE FOR MULTIPLE APPLICATIONS

**Boardroom, guest services, conference hall, barback, and meeting room.**

**Set-up for food service, audio-visual equipment, displays, and much more.**

- Modesty panel adds privacy and serves as wire management tray to keep cables organized
- Mobility: Needs no caddy. One person can easily roll this table into service or storage.
- Top edge is SICO's practically indestructible Armor Edge®
- Optional: Wire management grommets. A great computer station on wheels.
- Meets IACC (International Assoc. of Conference Centers) standards.
- Offset leg structure allows plenty of leg room.
- Pneumatic assist makes folding and unfolding the table quick and easy.
- Tamper resistant hex screw for locking table into open position.
- Non-marking casters roll easily over all surfaces. .
- A variety of shapes and sizes and a large assortment of laminate colors available to match your décor.

*See Specifications on page 19*



## MULTIAPP IIS LINENLESS SMALL MEETING/EVENT TABLE

YOUR CHOICE FOR FLEXIBLE, COLLABORATIVE MEETING EXPERIENCES THROUGHOUT A FACILITY

**A mobile folding, seamless-top table designed for dual-sided seating.**

*See Specifications on page 19*



Fold and nest for  
compact storage.





# BUFFET STATION SYSTEMS



Manufactured by  
**SICO**

Distributed in Canada by  
**davidson**  
FURNITURE SPECIALTIES LTD.

## SOPHISTICATE PLUS

WITH INDUCTION COOKING OR WARMING

ADD INDUCTION COOKING OR WARMING UNITS TO THE SICO SOPHISTICATE TABLE AND YOU GET A MOBILE BUFFET STATION THAT IS READY FOR ACTION.

*See Specifications on page 19*



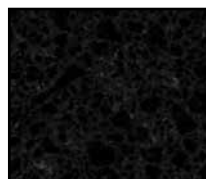
The Sophisticate Plus has multiple configuration options:  
A) 1 or 2 cooking units, B) 1, 2, or 3 warming units,  
C) 1 cooking unit, D) 1 warming unit and 1 cooking unit



Armor-Edge® also available.

Folds for easy transport and storage.

## STANDARD GRANITE COMPOSITE TOP CHOICES



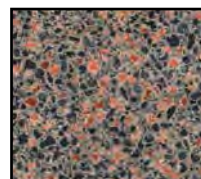
Nero Galaxy (60)



Karra Oro (62)



Bianco Modena  
(67)



St. Leo's Copper (68)

# MOBILE BUFFET STATIONS

WITH INDUCTION COOKING OR WARMING

MULTIPLE MODELS TO CHOOSE FROM FOR ALL OF YOUR BUFFET NEEDS.

The SICO® Mobile Buffet Station Personalization Program is the art of creating distinctive systems to reflect your property's unique personality. SICO® gives you the flexibility to create individually tailored buffet units that complement your property's distinctive charm with an assortment of station styles, configurations, body designs and finishes.

Manufactured by  
**SICO**

Distributed in Canada by  
**davidson**  
FURNITURE SPECIALTIES LTD.

## DECO



DECO Cooking Station with Trapezoid Side Station  
(Acrylic shown)



DECO Sushi Station  
(Amesbury wood veneer shown)



Induction Warming Station  
(Laminate shown)

## OVATION



Ovation Multi-Purpose Station



Ovation Warming Station



Ovation F & B Station



# ROOM SERVICE TABLES

3-year warranty against manufacturer's defects. Lifetime warranty on welds.

## OVAL TRI-FOLD

Tabletop	36" x 42" (92cm x 107cm)
Table Height	30" (76cm)
Table Weight	65 lbs. (29 kg.)
Model #	TRT72FSC02BG (Chrome Frame) TRT72FSC02DG (Black Frame)

## SQUARE TRI-FOLD

Tabletop	36" x 36" (92cm x 92cm)
Table Height	30" (76cm)
Table Weight	65 lbs. (29 kg.)
Model #	TRT72FSE02BG (Chrome Frame) TRT72FSE02DG (Black Frame)

## RIGID-FRAME

Tabletop	36" x 38" (92cm x 97cm)
Table Height	30" (76cm)
Table Weight	63 lbs. (28 kg.)
Model #	TRR32FSB02BS (Chrome Frame)

## OVAL BI-FOLD

Tabletop	36" x 42" (92cm x 107cm)
Table Height	30" (76cm)
Table Weight	63 lbs. (28 kg.)
Model #	TRB72FSC02BG (Chrome Frame) TRB72FSC02DG (Black Frame)

## SQUARE BI-FOLD

Tabletop	36" x 36" (92 cm x 92 cm)
Table Height	30" (76cm)
Table Weight	63 lbs. (28 kg.)
Model #	TRB72FSE02BG (Chrome Frame) TRB72FSE02DG (Black Frame)

## Uni-Fold

Tabletop	28 1/2" x 36" (72cm x 92cm)
Table Height	30" (76cm)
Table Weight	44 lbs. (20 kg.)
Model #	TRU72FSA02BG (Chrome Frame) TRU72FSA02DG (Black Frame)

Optional: Table Guide available.

Model # 129370

[See more details on pages 3 - 5](#)

# FOOD WARMERS & TRANSPORT

1-year warranty against manufacturer's defects. Lifetime warranty on welds.

## ELECTRIC

### 120 VOLT MODEL

Size	19 2/9" high x 16" deep x 15 1/2" wide (49cm x 41cm x 39cm)
Weight	23 lbs. (10.4 kg.)
Model #	4918-700

### 240 VOLT MODEL

Size	19 2/9" high x 16" deep x 15 1/2" wide (49cm x 41cm x 39cm)
Weight	23 lbs. (10.4 kg.)
Model #	4918-800

## MOBILE TRANSPORT

### 120 VOLT MODEL

Size	79 1/4" high x 40" wide x 20 1/2" deep (201cm x 102cm x 52cm)
Weight	103 lbs. (47 kg.) transport only
Model #	3909-100

### 240 VOLT MODEL

Size	79 1/4" high x 40" wide x 20 1/2" deep (201cm x 102cm x 52cm)
Weight	103 lbs. (47kg.) transport only
Model #	3909-200

## MOBILE ELECTRIC

### 120 VOLT MODEL

Model # 4938-700

### 240 VOLT MODEL

Model # 4938-800

SPECIFICATIONS: Each unit is 300 watts (2.5 amps at 120 volts, 1.3 amps at 240 volts). Plug is conventional 3-prong. Under normal conditions, warmers take 16 minutes to reach 160 degrees F. (71 degrees Celsius), 20 minutes to reach 170 degrees F (77 degrees Celsius) the average stabilizing temperature.

## SOLID

Size	15 1/2" wide x 15 1/2" deep x 19 2/9" high (39cm x 39cm x 49cm)
Weight	21 lbs. (9.5 kg.)
Model #	4921-201

[See more details on pages 6 - 7](#)

# SOPHISTICATE LINENLESS TABLE

3-year warranty against manufacturer's defects. (Excludes natural stone composite top.) Lifetime warranty on welds.

## GRANITE TOP

Tabletop	32" (82cm) W x 72" (183cm) L.
Table Height	36" (91cm) or 32" (82cm) hts.
Table Weight	205 lbs. (92kg)
Model #	TBG11NPG 32" High, 32" x 72" Rectangle

## HIGH PRESSURE LAMINATE TOP

Tabletop	32" (82cm) W x 72" (183cm) L.
Table Height	36" (91cm) or 32" (82cm) hts.
Table Weight	127 lbs. (57kg)
Model #	Wood-Edge = TBW11NPG 36" High, 32" x 72" Rectangle Laminate-Edge = TBL11NPG 36" High, 32" x 72" Rectangle

[See more details on page 8](#)

# SICO SOCIALIZER® LINENLESS TABLE

3-year warranty against manufacturer's defects. Lifetime warranty on welds.

## THE STAND-A-ROUND

SICO SOCIALIZER® Standing Height Tables

Tabletop	36" (91cm) diameter
Table Height	41" (104cm)
Table Weight	53 lbs. (24kg)
Model #	TRS52USD Round Top TRS52USG Rectangle Top

## THE SIT-A-ROUND

SICO SOCIALIZER® Seated Height Tables

Tabletop	36" (91cm) diameter
Table Height	29" (74cm)
Table Weight	53 lbs. (24kg)
Model #	TRS52DSD Round Top TRS52DSG Rectangle Top

## THE ALL-A-ROUND

SICO SOCIALIZER® Multiple Height Table

Tabletop	36" (91cm) diameter
Table Height	29" (74cm) to 41" (104cm)
Table Weight	53 lbs. (24kg)
Model #	TRS52TSD Round Top TRS52TSG Rectangle Top

[See more details on page 9](#)



# DELUXE LINENLESS CATERING TABLES

3-year warranty against manufacturer's defects. Lifetime warranty on welds.

## TWO-TIER DELUXE

Tabletop 1st-Tier	72" x 32" (183cm x 81cm)
Tabletop 2nd-Tier	72" x 17" (183cm x 43cm)
Table Height	30" (76cm)
Table Weight	152 lbs. (69 kg.)
Model #	TB222GSG

## SINGLE-TIER DELUXE

Tabletop	72" x 32" (183cm x 81cm)
Table Height	30" (76cm)
Table Weight	110 lbs. (50 kg.)
Model #	TB322GSG

[See more details on page 10](#)

# CLASSIC CATERING TABLES

3-year warranty against manufacturer's defects. Lifetime warranty on welds.

## TWO-TIER SR.

Tabletop	72" x 29" (183cm x 74cm)
Table Height	30" (76cm)
Table Weight	135 lbs. (61 kg.)
Model #	TB212GSG

## TWO-TIER JR.

Tabletop	50" x 29" (127cm x 74cm)
Table Height	30" (76cm)
Table Weight	125 lbs. (57 kg.)
Model #	TB212GSE

## SINGLE-TIER

Tabletop	72" x 29" (183cm x 74cm)
Table Height	30" (76cm)
Table Weight	105 lbs. (48kg.)
Model #	TB312GSG

[See more details on page 11](#)

# SICO ARMOR-EDGE® FLT

3-year warranty against manufacturer's defects. Lifetime warranty on welds.

### OVAL

Tabletop	60"x72" (152cm x 183cm)	Weight	85 lbs. (39kg)	Model #	C7113-183
----------	-------------------------	--------	----------------	---------	-----------

### ROUND

Tabletop	60" (152cm)		67 lbs. (30kg)		C7010-153
	66" (168cm)		75lbs / (34kg)		C7010-165
	72" (183cm)		88 lbs / (40kg)		C7010-183

### RECTANGLE

Tabletop	18"x72" (46cm x 183cm)	Weight	41 lbs / (19kg)	Model #	C7211-183
	30"x72" (76cm x 183cm)		54 lbs / (25kg)		C7212-183
	18"x96" (46cm x 244cm)		52 lbs / (24kg)		C7211-244
	30"x96" (76cm x 244cm)		71 lbs / (32kg)		C7212-244

### HALF-ROUND

Tabletop	72" (183cm)	Weight	55 lbs / (25kg)	Model #	C740-183
----------	-------------	--------	-----------------	---------	----------

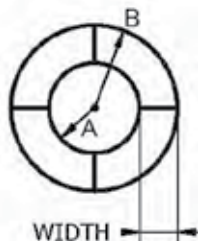
### QUARTER-ROUND

Tabletop	30" (76cm)	Weight	25 lbs / 11kg	Model #	C750-076
----------	------------	--------	---------------	---------	----------

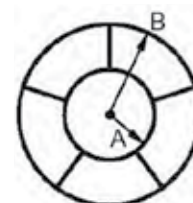
### Crescent

Tabletop	30" wide x 36"[A] / 66" [B]	Weight	55 lbs / (25kg)	Model #	C762-168
	(76cm wide x 91cm [A] / 168cm [B])				
	36" wide x 36"[A] / 72" [B] Crescent	Weight	65 lbs / (30kg)		C767-183
	(91cm wide x 91cm [A] / 183cm [B])				

Shows 30" wide crescent tables. 4 needed per circle



Shows 36" wide crescent tables. 5 needed per circle



\* 66" & 72" Round tables are only available in plywood, or Clear Maple laminate.

All tables are 30" (76cm) high

[See more details on page 12](#)

# PACER TABLE

15-year warranty against manufacturer's defects. Lifetime warranty on welds.

### OVAL

Tabletop	60"x66" (152cm x 168 cm)	Weight	132 lbs / 60kg	Model #	EP175-165N
	48"x60" (122cm x 152cm)		128 lbs / 58kg		EP175-120N
	60"x72" (152cm x 183cm)		132 lbs / 60kg		EP175-180N

### ROUND

Tabletop	48" (122 cm)	Weight	95 lbs / 43kg	Model #	EP075-120N
	60" (152cm)		115 lbs / 52kg		EP075-150N
	66" (168cm)		132 lbs / 60kg		EP075-165N
	72" (183cm)		156 lbs / 71kg		EP075-180N

### SQUARE

Tabletop	48" (122cm)	Weight	95 lbs / 43kg	Model #	EP375-120N
----------	-------------	--------	---------------	---------	------------

### RECTANGLE

Tabletop	48"Lx30"W (122cm x 76cm)	Weight	75 lbs / 34kg	Model #	EP275-120N
	60"Lx30"W (152cm x 76cm)		85 lbs / 39kg		EP275-150N
	72"Lx30"W (183cm x 76cm)		93 lbs / 42kg		EP275-180N
	96"Lx30"W (244cm x 76cm)		128 lbs / 58kg		EP275-240N

### HEXAGON

Tabletop	48" (122cm)	Weight	95 lbs / 43kg	Model #	EP475-120N
----------	-------------	--------	---------------	---------	------------

### OCTAGON

Tabletop	60" (152cm)	Weight	115 lbs / 52kg	Model #	EP575-150N
----------	-------------	--------	----------------	---------	------------

All tables available in 27" (69cm), or 29" (74cm) height. 32" (81cm) height ADA tables available in certain shapes and sizes.

[See more details on page 13](#)

## PACER II LINENLESS TABLE

10-year warranty against manufacturer's defects. Lifetime warranty on welds.

### OVAL

Tabletop	60"x66" (152cm x 168 cm)	Weight	134lbs / 61kg	Model #	EP9375-165N
	60"x72" (152cm x 183cm)		140 lbs / 64kg		EP9375-180N

### ROUND

Tabletop	58" (147 cm)	Weight	127 lbs / 58kg	Model #	EP9375-147N
	60" (152cm)		130 lbs / 59kg		EP9375-150N
	72" (183cm)		142 lbs / 64kg		EP9375-183N

### OCTAGON

Tabletop	60" (152cm)	Weight	129 lbs / 59kg	Model #	EP9375-350N
----------	-------------	--------	----------------	---------	-------------

[See more details on page 13](#)

## MULTIAPP LINENLESS TABLE

10-year warranty against manufacturer's defects. Lifetime warranty on welds.

All MultiApp tables are 29" (74cm) in height.

### QUARTER-ROUND

Tabletop	24" (61 cm)	Weight	52 lbs / 24kg	Model #	TUK22WST
	30" (76 cm)		65 lbs / 30kg		TUK22WSU

### HALF-ROUND

Tabletop	48" (122 cm)	Weight	74 lbs / 34kg	Model #	TUH22WSR
	60" (152cm)		90 lbs / 41kg		TUH22WSS

### RECTANGLE

Tabletop	60"Lx24"W (152cm x 61cm)	Weight	90 lbs / 41kg	Model #	TUC22WPH
	72"Lx24"W (183cm x 61cm)		100 lbs / 45kg		TUC22WPI
	96"Lx24"W (244cm x 61cm)		130 lbs / 59kg		TUC22WPK
	60"Lx30"W (152cm x 76cm)		95 lbs / 43kg		TUC22WQH
	72"Lx30"W (183cm x 76cm)		105 lbs / 48kg		TUC22WQI
	96"Lx30"W (244cm x 76cm)		135 lbs / 61kg		TUC22WQK

[See more details on page 14](#)

## MULTIAPP IIS LINENLESS SMALL MEETING/EVENT TABLE

10-year warranty against manufacturer's defects. Lifetime warranty on welds.

All three Ellipse table lengths have tops that are 34" wide at the mid-point, 30" wide at either end, and 29" high.

### ELLIPSE

Tabletop	60" (152cm)	Weight	105 lbs / 47kg	Model #	TUD22WTH
	72" (183cm)		115 lbs / 52kg		TUD22WTI
	96" (244cm)		145 lbs / 66kg		TUD22WTK

### RECTANGLE

Tabletop	60"Lx24"W (152cm x 61cm)	Weight	90 lbs / 41kg	Model #	TUD22WPH
	72"Lx24"W (183cm x 61cm)		100 lbs / 45kg		TUD22WPI
	96"Lx24"W (244cm x 61cm)		130 lbs / 59kg		TUD22WPK
	60"Lx30"W (152cm x 76cm)		95 lbs / 43kg		TUD22WQH
	72"Lx30"W (183cm x 76cm)		105 lbs / 48kg		TUD22WQI
	96"Lx30"W (244cm x 76cm)		135 lbs / 61kg		TUD22WQK

Grommets and Unit-to-Unit connectors are NOT available on the Elliptical Edge  
Top sizes of the MultiApp IIS. Both are available on the Rectangle shape.

[See more details on page 14](#)

## SOPHISTICATE PLUS

Warranty: 3-year warranty against manufacturer's defects. (Excludes natural stone composite top.) Lifetime warranty on welds.

Tabletop	32" (82cm) W x 72" (183cm) L.
Table Height	36" (91cm) or 32" (82cm) hts.
Table Weight	205 lbs. (92kg)
Model #	RBF21NPG

[See more details on page 15](#)

## MOBILE BUFFET STATIONS

See Mobile Buffet Station brochure for details, or contact your SICO sales representative at 800-533-7426.

[See more details on page 16](#)

SICO® provides a diverse line of products to support the needs of your property. The table solutions found within these pages can handle your banquet, catering, in-room dining, pre-function, or seminar activity. However, SICO® offers complete event solutions with the addition of a varied selection of dance floors, stages, and other hospitality products.

Contact your SICO® Hospitality sales representative at **800-533-7426**, or visit our web site at **www.sicoinc.com** for additional details.

## PORTABLE DANCE FLOORS



Starlight II Dance Floor



Original Parquet Dance Floor



Cam-Lock Parquet Dance Floor



Cam-Lam Dance Floor

## MEETING ROOM STAGES



Tri-Height Mobile Folding stages



1800 Mobile  
Folding Stages



Folding Leg Stages



## OTHER SICO PRODUCTS



Mobile Folding Boardroom/Conference Tables



Mobile Folding Cafeteria Tables  
with attached seats



Mobile Folding LB Table

## LUGGAGE CARTS



## MOBILE SLEEPERS



## WALLBEDS



[www.sicoinc.com](http://www.sicoinc.com)



**The Americas**  
SICO AMERICA INC.  
7525 Cahill Road  
Minneapolis, MN 55439 USA  
In U.S. Phone (800) 328-6138  
Outside U.S. (952) 941-1700  
Fax (952) 941-6688  
e-mail: [sales@sicoinc.com](mailto:sales@sicoinc.com)

**Australasia & South Africa**  
SICO SOUTH PACIFIC  
3 Blade Close  
Berkeley Vale, NSW 2261  
Australia  
Phone [61] (2) 4336-1333  
Fax [61] (2) 4388-4643  
e-mail: [sales@sicosp.com.au](mailto:sales@sicosp.com.au)

**Europe & Middle East**  
SICO EUROPE LTD.  
The Link Park  
Lymington Industrial Estate  
Lymington, Kent CT21 4LR  
United Kingdom  
Phone [44] (1303) 234000  
Fax [44] (1303) 234001  
e-mail: [sales@sico-europe.com](mailto:sales@sico-europe.com)

**Asean Countries,  
Korea & India**  
SICO ASIA PTE LTD.  
1 Clementi Loop #06-06  
Clementi West LogisPark  
Singapore 129808  
Phone (65) 6500-0800  
Fax (65) 6500-0811  
e-mail: [sales@sicoasia.com](mailto:sales@sicoasia.com)

**Japan**  
SICO JAPAN  
Izumishoji Bldg. 2F  
4-2-6, Kojimachi, 4-Chome  
Chiyoda-ku, Tokyo 102-0083  
Japan  
Phone [81] (3) 3288-0145  
Fax [81] (3) 3288-0146  
e-mail: [sales@sico-japan.com](mailto:sales@sico-japan.com)

**China**  
SICO-SST  
NO. 8, Anqing St.  
Area B, Tian Zhu Airport  
Industrial Zone  
Shun Yi District  
Beijing, 101302, China  
Phone [86] (10) 8048-1587  
Fax [86] (10) 8048-2510  
e-mail: [sales@sico-sst.com](mailto:sales@sico-sst.com)