

Manufactured by
Davidson
 FURNITURE SPECIALTIES LTD.
 40 Konrad Crescent, Markham, Ontario L3R 8T4
 TEL: (905) 475-8376 FAX: (905) 475-0792
 Email: sales@davidsonfurniture.ca

**STAND UP TABLE WITH
 TUBULAR STEEL XBASE
 320 Series**

**Stand Up
 42" High Table**



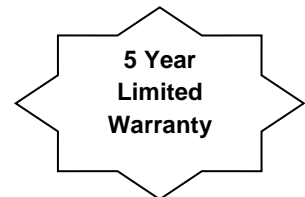
Model No.	Size L x W x H	Top Surface	Weight (lbs)
320-3000-VL-SU	30" Dia x 42"	High Pressure Laminate (-60 finish)	44
320-3600-VL-SU	36" Dia x 42"		58
320-4200-VL-SU	42" Dia x 42"		70
320-4800-VL-SU	48" Dia x 42"		90
320-3030-VL-SU	30" x 30" x 42"		50
320-3636-VL-SU	36" x 36" x 42"		60
320-4242-VL-SU	42" x 42" x 42"		72
320-4848-VL-SU	48" x 48" x 42"		92

Standard Features

- 42" fixed height
- Top surface finished with Wilsonart (-60 finish) high pressure laminate bonded to a 1 1/8" particleboard (45 lb density) core and black vinyl T-mold edge
- Xbase (4 prong) with 2 1/2" vertical column x 1 3/4" horizontal prong, 14 gauge, tubular steel, seamless end caps, solid steel mounting plate, adjustable plastic glide
- Black powder coat metal finish

Optional Features

- Top with self edge
- Top edge with 1 1/4" thick solid bullnosed oak or maple



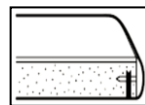
Standard Colour Selections

Plastic Laminate Surface



Full Spectrum of WILSONART laminate

Black T-Mold Edge



Black Metal

