

Distributed by  
**Davidson**  
 FURNITURE SPECIALTIES LTD.  
 40 Konrad Crescent, Markham, Ontario L3R 8T4  
 TEL: (905) 475-8376 FAX: (905) 475-0792  
 Email: sales@davidsonfurniture.ca

**FOLDING TABLES - LIGHTWEIGHT  
 ABS PLASTIC TOP**

**midwest** FOLDING  
 PRODUCTS

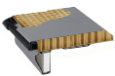
**Heavy Duty  
 Models**



Style	Model No.	Size W x L x H	Seating Capacity	Wt (lbs)
Round	R60NLW	60" Diameter x 29"	8	60
	R72NLW	72" Diameter x 29"	10	78
Rectangular	630NLW	30" x 72" x 29"	8	48
	830NLW	30" x 96" x 29"	10	62
Serpentine	S305NLW	30" x 60" Rad x 29"	3	56
Seminar Standard Leg	618NLW	18" x 72" x 29"	3	38
	818NLW	18" x 96" x 29"	4	46
Seminar Comfort Leg	CP618NLW	18" x 72" x 29"	3	39
	CP818NLW	18" x 96" x 29"	4	48

*Comfort Leg Seminar tables furnished with steel frames*

**Table Top**



- Grey thermoformed ABS plastic surface permanently bonded to a corrugated honeycomb core.
- Top is internally supported near the perimeter by an 18 gauge, 1 13/16" high, steel channel frame.
- Black edge is protected against impact with a profile extrusion of high-impact, PVC plastic molding that interlocks and is permanently bonded to the ABS exterior of the table.
- Corners of rectangular models are protected with injection molded PVC plastic sections.

**Leg Assembly**



- Wishbone style leg assembly is constructed with one piece load bearing vertical members of 1" diameter, 16 gauge steel tubing, capped with high impact plastic glides, secured with internal spring steel grippers.
- Folding leg braces are constructed of 7/8" wide, 1/8" thick edge radiused steel. Coil-spring actuated, case hardened steel poppets engage mating holes in the brace to secure the brace automatically when it is opened.
- Legs and leg braces are anchored to the table top with 18 gauge steel anchor plates.
- Black powder coat finish.

**Loading**

- Static load capacity tested to 1,200 lbs

